

Marriotts SEND Information Report 2018-19

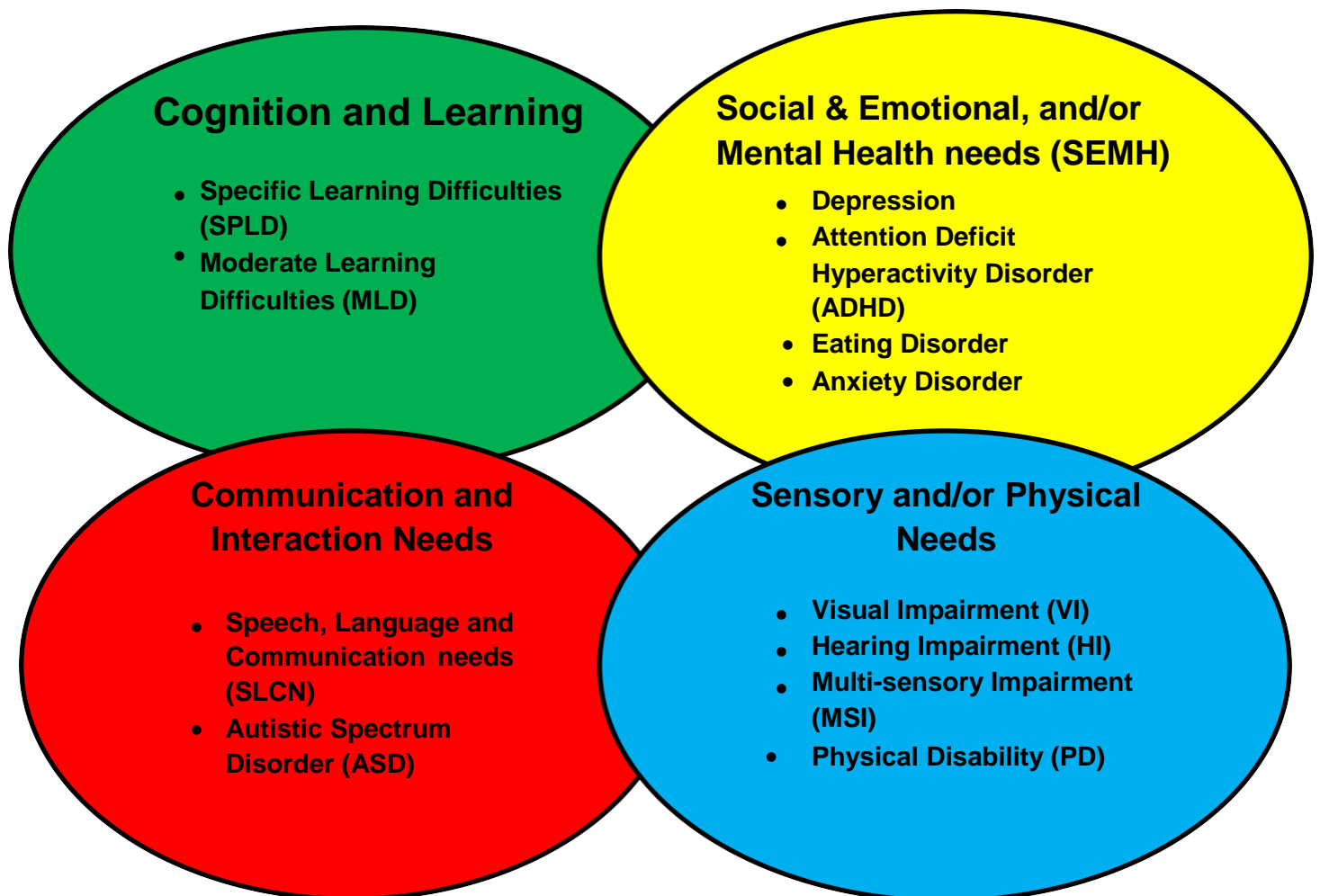
At Marriotts School we provide support for students that have Special Educational Needs and Disabilities (SEND) as follows:

Cognition & Learning- – including support strategies for ADHD and Dyslexia in the classroom

SEMH- including teacher support, mentoring and counselling

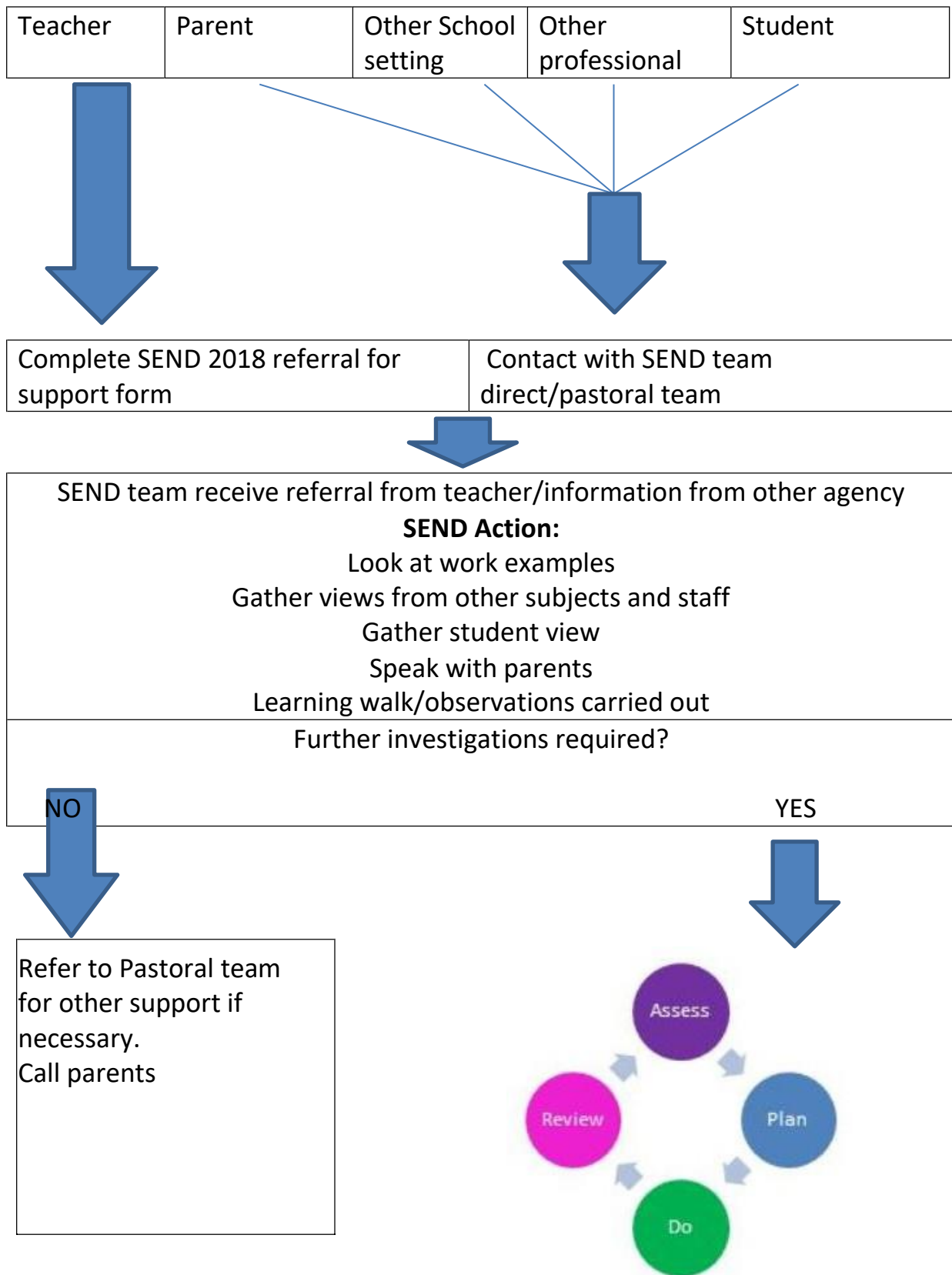
Communication – including ASD strategies, and support from Speech and Language

Sensory/Physical – supporting visual aids, supporting accessibility for students with a physical disability.



If you have a concern about a need with your child, or if a teacher would like to raise a concern about a learning need within the classroom, Marriotts School will use the following flowchart to enable a link with parents/staff/outside agencies and with the student.

Flowchart to identify students with SEND and assessing their needs



The SEND Team are as follows:

Mrs Lesley Tether – Assistant Headteacher for SEND and Inclusion

Mrs Gill Ridley – Inco Mrs Sarah Alcock Green – Assistant SENCo

Mrs Lisa Powell – Baseroom Leader

Ms B Tamizi – SENCo Ms L Albone – SENCo

Mrs Kim Hays – Secretary for SEND team

In addition we have ten teaching assistants within the school.



Arrangements for consulting parents and students with SEND

If your child is receiving SEND support and has regular reviews via the Plan, Do, Review cycle, parents will have contact on SEND matters specifically three times per year. If your child is on a monitoring review you will have contact on SEND matters once a year in addition to the contact made via the school reporting systems and parents evenings. We are developing a range of person centred approaches to ensure the views and experiences of young people and their families are used to inform our work at Marriotts School. In both instances your child will be included in discussions about their education. Within this process Marriotts School will evaluate the effectiveness of provision via student progress, parent communication and student voice.

Transition Phases

There are different support arrangements to support students moving to different phases including:

KS 2-3 (into Year 7)	Visits to primary schools to see the SENCO Additional visits for parents and students Link Lead person to support
KS3-4 (into Year 9)	Support for SEND students & parent when choosing options Advice from Connexions Link lead person to support
KS4-5 (into Year 12)	Liaison with parents for next steps Advice from Connexions Link lead person to support



Differentiation and Quality First Teaching

For students receiving SEND support, Marriotts School will ensure that the priority is quality first class teaching, the teacher will ensure that all students including those with SEND can access work using differentiation methods to support the learner including, where appropriate the guided input from a teaching assistant.

In addition, Marriotts School will always consider reasonable adjustments to ensure that SEND students can access learning.



Training

Marriotts SEND staff have a range of skills and expertise to support children and young people with SEND. In addition; there are regular opportunities for Continued Professional Development using a range of approaches available for all staff.

Also, Marriotts School works in partnership with external agencies to provide support for students with SEND including:

Educational Psychologist	Speech and Language Therapy	Autism Advisory Service
CAMHS	Connexions	School Heath/Nurse
Occupational Therapy	Visual Impairment Team	Child Protection Team



Progress

The progress of students with SEND are monitored and reported on every module to the Senior Leadership Team. This will ensure that students with SEND are making progress individually or as they should be expected. Student progress is reported to parents three times per year via whole school meetings and reports.



Social and Emotional Development

Marriotts School includes extra pastoral support arrangements for listening to the views of the students with SEND e.g. using Student Voice and measures to prevent bullying in order to respond appropriately to student needs. Guidance is given to all students on how to access this support and systems are in place to ensure the appropriate support is effective.



Activities

Marriotts School is an inclusive school offering a range of extra-curricular clubs and trips for all students to access. Reasonable adjustments are considered along with accessibility to trips when planning and organising. Marriotts school aims for 100% attendance to trips for all considered.



Marriotts School involves other bodies, including health and social care bodies, local authority support services and voluntary sector organisations, to promote good outcomes by working with students with SEND and where appropriate, supporting their families.

Marriotts School has arrangements for handling concerns and complaints from parents of students with SEND about the provision made at the school. Should you have any concerns please contact your child's form tutor in the first instance. Staff emails can be found on our school website www.marriotts.herts.sch.uk or you can call our school number 01438 7426999.

You may also like to read our Hertfordshire LA Local Offer which is on our school website.

